

# RTC™

A pre-captured, compression-limiting system providing positional tolerance and prevents fastener pull-through in wide-spanning slots.



### Positional Compensation

Provides large radial float to absorb tolerances in build variations.



### Fastener Standardization

Eliminates need for specialty fasteners by accepting fasteners with common flange sizes.



### High Durability

Improves joint durability by minimizing creep and preventing fastener pull-through.



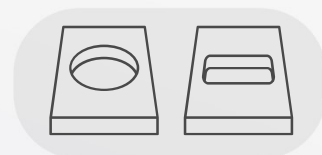
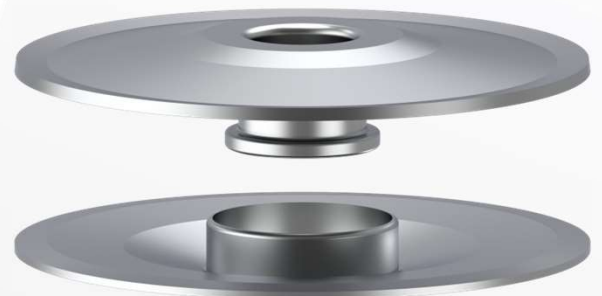
### Compression Limiting

Protects substrates and maintains consistent clamp load by limiting compression in the assembled joint.



### Visible Pre-Assembly

Installs and retains in panel prior to final assembly.



**Installs onto Circular or Slot-Shaped Holes**

For more information **contact your Account Manager or call 248.589.2500**

# RTC™



Positional  
Compensation



Fastener  
Standardization



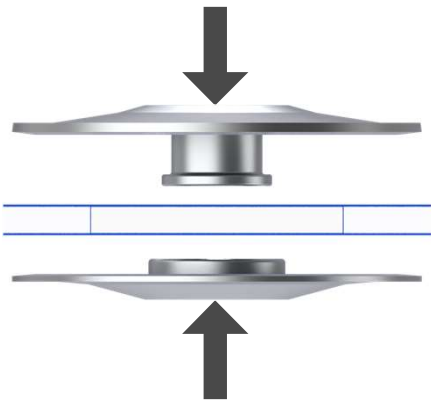
High Durability



Compression  
Limiting



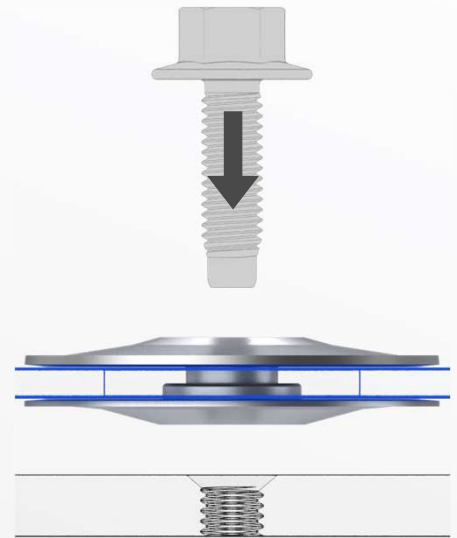
Visible  
Pre-Assembly



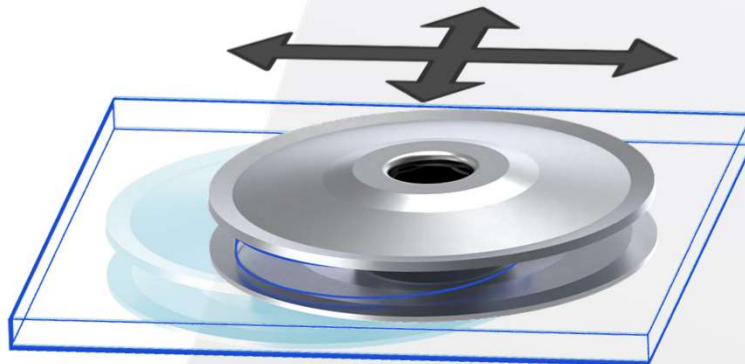
Hand installs against both  
sides of panel



Installed pieces retain to  
panel before final assembly



Minimizes joint creep and  
prevents fastener pull-through  
during and after assembly



Exceptional float absorbs build variation  
tolerances or assembly misalignments

For more information **contact your  
Account Manager or call 248.589.2500**

[itwautomotive.com](http://itwautomotive.com)